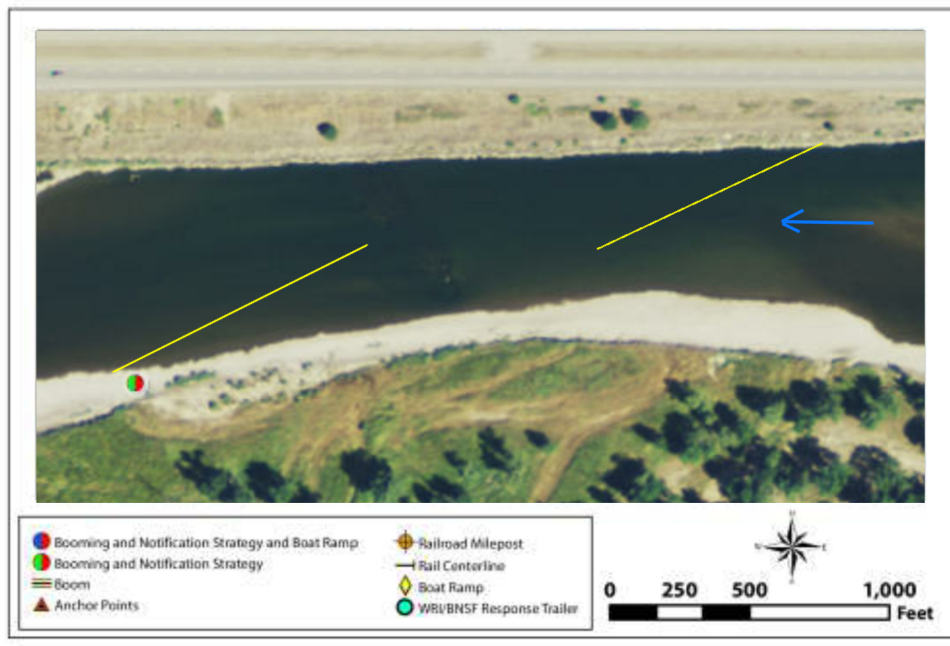


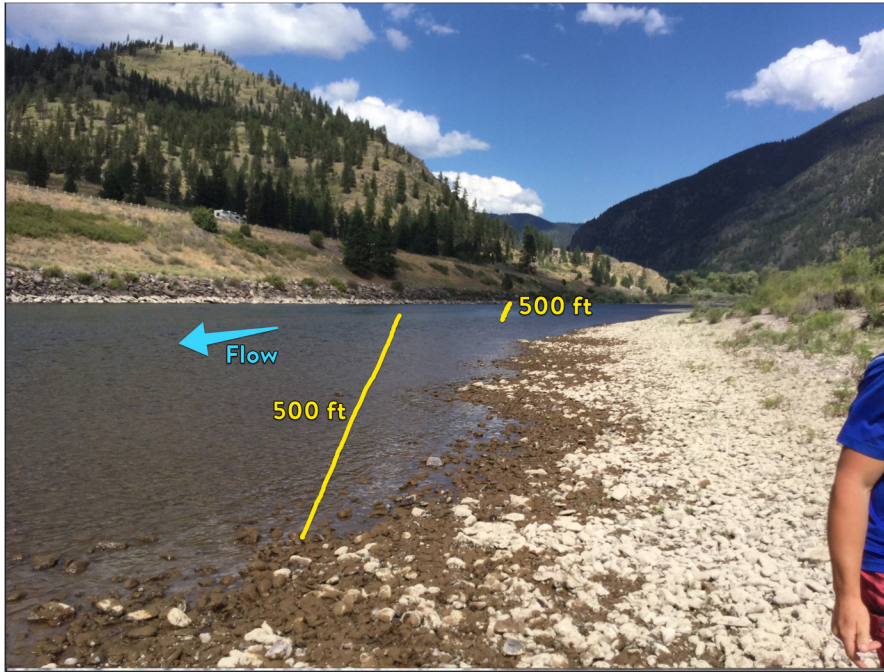
<b>Site Lat Long:</b>	47.0155733859 -114.538746127 ( <a href="http://www.google.com/maps/place/47.0155733859,-114.538746127">http://www.google.com/maps/place/47.0155733859,-114.538746127</a> )
<b>Strategy Objective:</b>	Notification and collection/recovery. Notify <b>Mineral County Disaster and Emergency Services, EPA Region 8, US Fish, Wildlife Service, MT Fish, Wildlife, Parks, MT DEQ, Alberton, MT FWP.</b> Deploy containment boom and initiate product recovery.
<b>Implementation:</b>	Clark Fork River flow direction is to the west. Deploy containment boom and initiate product recovery at the Alberton Gorge Ranch. Large access site. Nearest boat ramp is St. John's FAS. Secure upstream end of 500' of boom to river right shoreline and downstream end to a midstream anchor to create a deflection to river left. Secure upstream end of second 500' to a midstream anchor and downstream end to river left shoreline to create collection point. Vacuum truck access is poor.
<b>Site Safety Note:</b>	Slip, trip, fall hazards; traffic/roadway hazards, congestion, water hazards, hazards from spilled material. Expect extreme winter conditions from middle of November to middle of March. Complete a task specific Job Safety Analysis.
<b>Staging Area:</b>	On site staging is a large fishing access site with boat ramp
<b>Field Notes:</b>	<ul style="list-style-type: none"> <li>• Boat use restricted in this area. Will need approval from FWP to operate boat.</li> <li>• 4WD Access: <b>YES</b> Seasonal Access Only: <b>NO</b> Locked Gate: <b>NO</b></li> </ul>
<b>Resources Targeted</b>	Bull Trout Critical Habitat, Recreational Use, Wildlife Habitat, T & E Species, Irrigation Water Intake, Bull Trout
<b>Watercourse:</b>	Clark Fork River: gradient-low; substrate-gravel; approx. width: 240ft.; approx. depth: 10 to 20 feet; channelized; slow moving



Suggested Equipment	
Quantity	Description
1000 ft	Curtain Boom Tow Bridles
As Appropriate	Portable Skimmer; Vacuum Truck; Absorbent Bo
1250 ft.	Polypropylene Line
15	Steel Post Anchors
As Appropriate	Post pounder, shovels, knife, wood saw
2	In Water Anchors
As Appropriate	PFD work vests/rubber boots
As Appropriate	Throw bags, first aid kit
Jet boat/raft needed for strategy implementation? <input checked="" type="checkbox"/> Y	

Suggested Personnel	
Quantity	Description
1	Hazmat Supervisor
2	Hazmat Field Techs
1	Safety Supervisor/Traffic Flagger
1	Boat Operator and Swiftwater Tech

Visited on 2015-06-17, River discharge in CFS: 7500



**Emergency 24-Hr Contacts**

Blank area for emergency contact information.

**Directions to Site from Missoula:**

Blank area for directions to the site from Missoula.



Looking west from collection site



Looking east from collection site